



User Manual

Digital Camera Driver

For Windows 95, 98, NT 3.x, 4.0 or later version

● Use the Digital Camera Driver

a. How to download pictures from Digital Camera

1. First, make sure the TWAIN driver and application software are installed correctly.
2. Connect the camera to your computer (serial port).
3. Turn on the camera
4. Start TWAIN compatible software
5. Select the TWAIN driver: You do not need to repeat this step for subsequent use of the TWAIN driver unless you switch devices.
6. Acquire or import image from the camera: Choose *File > Acquire > TWAIN* to start the digital camera driver.
7. Switch to the download mode in the TWAIN driver User Interface
8. Select the image(s) and click Download button to download

b. Working with TWAIN driver User Interface

Take Mode:



1. **Viewfinder Windows:** The Viewfinder Windows is used for focusing the preferred object when you are using it in the tethered mode. It acts as a preview window for your snapshot.

2. **Status Bar:** The Status Bar shows the current status of the active window.

3. Command Button:

1. **Take Pictures:** When linking the digital camera to work with PC, click on this button to take a full-size picture. The picture will be downloaded (transfer from camera) to PC and be displayed in a new window in the running

application software.

2. Self-Timer: The camera will automatically take the picture after 10 seconds. You can set the timer in the Property windows.

3. Record AVI: The AVI file is a video file. You can record a video of what you see through the Viewfinder Window. For later displaying, you can activate the media player or any other program that supports AVI files. Click Record AVI button again to stop the recording.

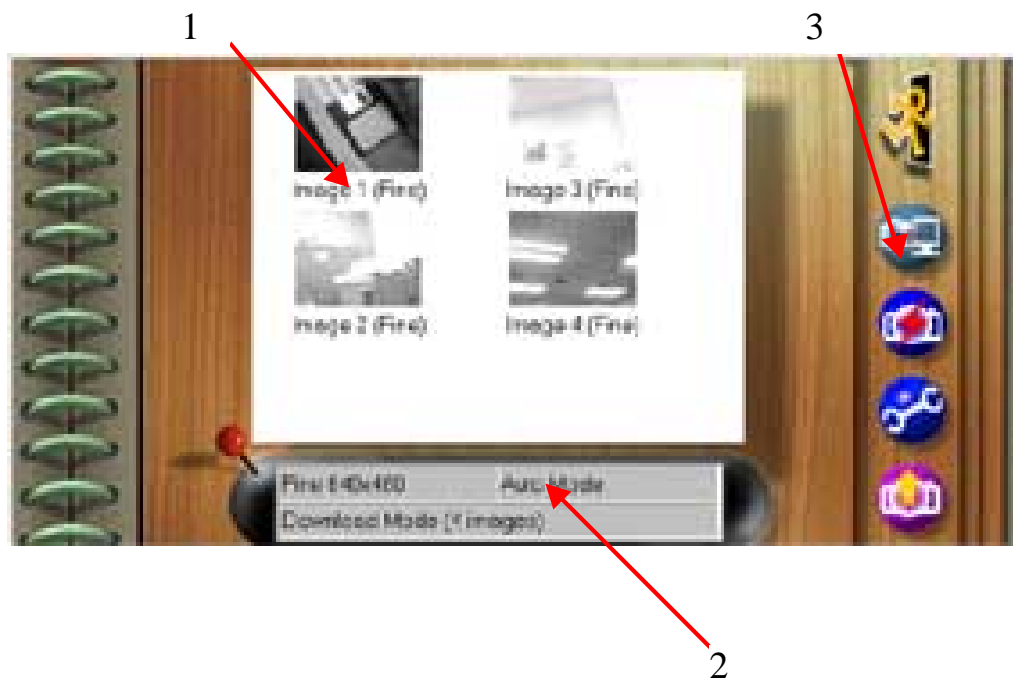
4. Pause: When Pause button pressed, the control of the TWAIN driver User Interface is off and switch to the camera itself. Click Pause again, you can switch the control back to the TWAIN driver.

5. Properties: All camera and image options can be set by the properties dialog box.

6. Download Images: Switch to Download Mode. You can select the preferred pictures stored on the memory card and download to PC.

7. Exit: Close the driver to exit and return to Windows.

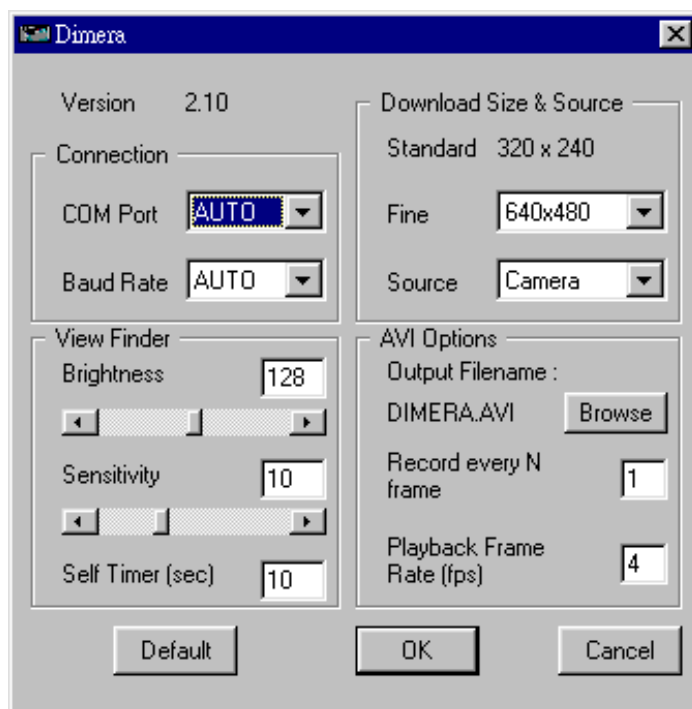
Download Mode:



1. **Picture Frame:** Picture Frame displays the captured pictures saved on memory card. You can select the picture(s) by clicking the thumbnails and clicking Download button to download to your PC.
2. **Status Bar:** The Status Bar shows the current status of the active window.
3. **Command Button:**
 1. **Exit:** Close the driver to exit and return to Windows.
 2. **Download:** Download the selected pictures to your PC.
 3. **Refresh:** You need to refresh the memory if the thumbnails are missing.
 4. **Properties:** All camera and image options can be set using the properties dialog box.
5. **Switch to Take Mode**

Property Windows

- **Version:** The TWAIN driver version.
- **Connection:** You can set the COM Port and Baud Rate in this field.
- **View Finder:** You can adjust the Brightness, Sensitivity, or Self-Timer in second in this field.
- **Download Image Size and Source:** You can change the download image size from 640 x 480 to 320 x 240 or vice versa and download image source from Camera or Card Reader (This is an optional devices.)
- **AVI Options:** You can set the output AVI file name and the default saved directory. Also, you can adjust the Record every N fame and Playback Frame Rate.
- **Default:** You can reset all the items to the default settings.



Support Microsoft NetMeeting

In addition to installing the NetMeeting driver of the camera, you also need:

1. 14.4 kbps modem, ISDN, or LAN (NetMeeting works best with a fast Internet connection.)
2. Sound card
3. Speakers
4. A microphone
5. Microsoft NetMeeting is available for free download from the NetMeeting Web site at <http://www.microsoft.com/netmeeting/>.